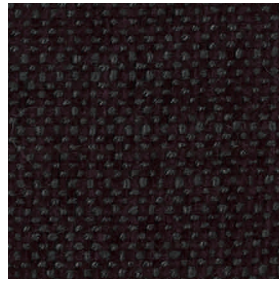
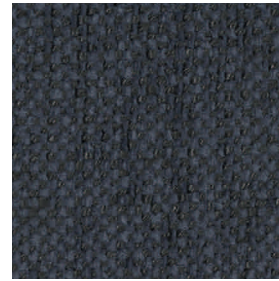




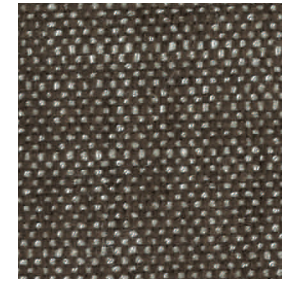
limette



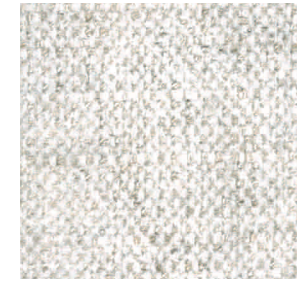
beere



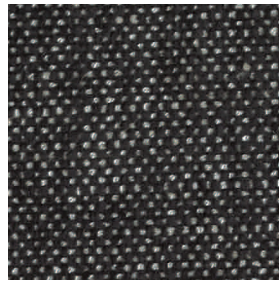
blau-grau



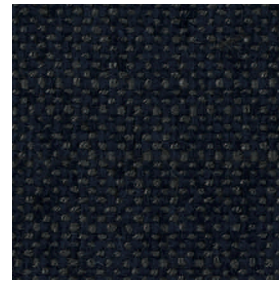
caramel



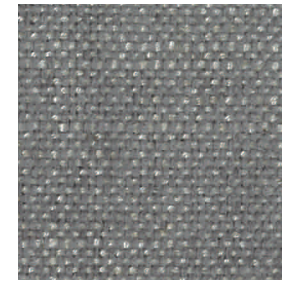
creme



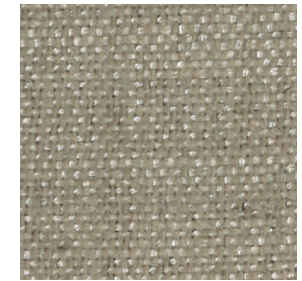
graphit



nachtblau



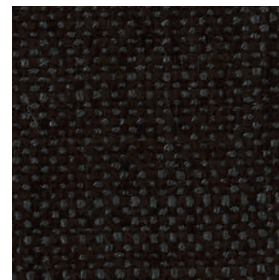
samtgrau



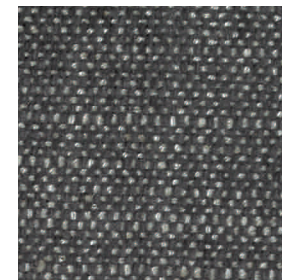
sand



schilf



schoko



stahl



schwarz

## Simba

Flachgewebe  
mit softig angenehmer Haptik

Stoffgruppe B  
40% PL, 40% VI, 20 % LI  
Scheuertouren: 25.000  
Lichtechtheit: 5  
Pillingbildung: 3/4

*signed*<sup>®</sup>  
bewegende Formen